

Collection

Spring 2008

Connection

A bi-annual publication of the Lamoille Regional Solid Waste Management District



• 2008 Household Hazardous Waste Collections •

NOTE NEW HOURS!

April 12

9:00am to 12:00pm

CCV Parking Lot – Harrel St., Morrisville

June 28

9:00am to 12:00pm

Worcester Transfer Station – Calais Rd., Worcester

August 16

9:00am to 12:00pm

Johnson Transfer Station – Wilson Rd., Johnson

October 18

9:00am to 12:00pm

G.W. Tatro – Jeffersonville

What To Bring

Pesticides/insecticides

Household cleaners

Automotive products

Pool/Hobby chemicals

Kerosene

Oil-based paints

Paint cleaner products

Waste oil

Thermostats

Thermometers

Gasoline

Aerosols

Businesses Must Pre-Register!

If you are a Conditionally Exempt Generator of HazWaste (less than 220 lbs./mo.), you should use these collections as a less expensive and more convenient method of hazardous waste disposal.

Businesses must pre-register no later than one week prior to the chosen collection date with a waste disposal inventory. For more information, contact the District Office at 888-7317 or visit our website at www.lrswmd.org.

What **NOT** To Bring

Fluorescent Bulbs*

Auto Batteries*

Computers*

Propane Tanks*

Alkaline Batteries

Gas Cylinders

Latex Paint

Radioactive material

Empty containers from hazardous products

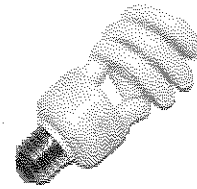
Medical waste and medicines

* These items are accepted year-round at any LRSWMD drop off for a minimal fee.



Visit our website at
www.lrswmd.org

What To Do If You Break A Compact Fluorescent Light Bulb



Compact fluorescent light bulbs have taken center stage lately.

While they use 75% less energy than an incandescent bulb and last almost 10 times longer than a standard incandescent bulb, they still contain mercury and cause a hazard when one breaks.

Follow these 6 steps to clean up a bulb breakage in your home or office.

1. Ventilate the room by closing all interior doors and vents, opening windows and any exterior doors in the room. Leave the room for at least 15 minutes.
2. Remove all materials you can and **don't use a vacuum cleaner**. Wear disposable gloves. Carefully scoop up any remaining small pieces of glass and powder using sticky tape.
3. Place all cleanup materials (cardboard, gloves, tape, etc.) into a glass or rigid container with a lid. Store the container outside of the house in an area inaccessible to children and pets.
4. Wash your hands.
5. Contact LRSWMD for proper disposal, or call 1.800.974.9559.
6. Leave windows in the affected room open as long as practical.

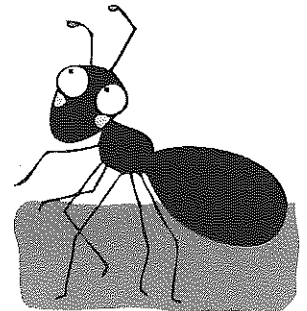
Got Ants In Your Pants?

These non-toxic ant control ideas really work!

Keep a spray bottle with white vinegar or soapy water handy, then fire at will. Place bay leaves, cayenne pepper, chalk, cinnamon or mint at the ants' entry points. This will turn them back around.

Many people swear by this recipe:

Mix $\frac{1}{4}$ cup sugar, $\frac{3}{4}$ cup water and 1 tablespoon of borax in a small jar. Stir and let it sit until dissolved. Soak a piece of bread crust about 1" square in the liquid until it is saturated. Place the dripping bread crust in the path where the ants are coming in. In a few minutes, the crust is completely covered by ants. You may need to place a couple more pieces of bread in the area to satisfy the amount of ants you have. The next day, the ants are gone and they don't come back.



**Helpful Websites
and Other
Little Tidbits
from the
LRSWMD**

**In 2005, 5.8
million tons of
DIRECT MAIL
were thrown
away in the US
- that's enough
to fill 450,000
garbage trucks!**

**Eliminate the
unwanted
catalogs you
receive.
Go to:
catalogchoice.org**

**"Ideal Bite"
offers bite-
sized ideas for
light green
living.
Check it out at
idealbite.com**

**With construc-
tion season just
a few months
away, try this
reuse option for
materials.
<http://vcrn.org/>
VT Construction
Reuse Network**

LRSWMD Recycling Specifications

New Items To Recycle

- Sour cream, cottage cheese & yogurt tubs
- Non-foam plastic egg cartons
- Frozen food trays
- Clear plastic hinged food containers, such as take-out & deli containers (no styrofoam)
- Pastry & cookie trays
- Tupperware & other similar food storage containers
- Vegetable & fruit containers
- Flower pots & seedling trays
- Plastic pails with handles removed up to 5 gallons in size
- Six pack, soda or beer boxes
- Blister packs (separate plastic from paper or cardboard)



DO NOT RECYCLE THESE PLASTIC ITEMS:

- Motor oil bottles or cans
- Toys
- Laundry baskets
- Housewares
- Sleds
- Electronic housing
- Medicine bottles
- Containers, caps, lids under 2" wide
- No styrofoam, plastic peanuts (reuse) or film (plastic bags, plastic wrap)

Other Recycling: Plastics

- Milk, cider, spring water & windshield washer jugs
- Bottles used for cleaning products
- Laundry bleach jugs
- Shampoo & dishwashing detergent bottles
- Soda & seltzer bottles
- Juice, water, cooking oil bottles & peanut butter jars



These Items Can Be Recycled Too!

- Tires
- Books
- Batteries
- Textiles
- Computers and electronics
- All scrap metal
- Fluorescent bulbs

Other Recycling: Paper, Glass & Metal

- Newspapers, including inserts
- Magazines, catalogs, phone books & glossy paper
- Corrugated cardboard (please flatten)
- Paper bags
- Boxboard (paper towel tubes, shoe boxes, CLEAN pizza boxes & other dry goods boxes)
- Office paper (including copier paper & gift wrap)
- Regular & window envelopes with mail removed
- Shredded paper (must be in clear, plastic bags)
- Glass bottles & jars (food & beverage only)
- Aluminum foil (including pie plates)
- Metal cans (food & beverage cans only)
- Aerosol cans (must be empty)



DO NOT RECYCLE THESE PAPER, GLASS OR METAL ITEMS

- Paper plates, cups or napkins
- Refrigerator or freezer boxes
- Carbonless paper
- Tissues
- Oily pizza boxes
- Drinking glasses
- Milk or drink boxes
- Detergent & cat litter boxes
- Pet food bags
- Bags with plastic handles
- Food soiled paper
- Tyvek envelopes
- Cookware, ceramics or dishes

LRSWMD Fee Schedule

WASTE TYPE	FEE
MSW	
Minimum Scale Fee	\$12.50
15 Gallon Bag	\$1.75
30 Gallon Bag	\$3.00
45 Gallon Bag	\$4.75
STS Scaled per ton with recycling	\$125.00
STS Scaled per ton without recycling	\$145.00
Bulk per yard	\$25.00
C&D	
STS Scaled per ton	\$155.00
Bulk per yard	\$40.00
Shingles per yard	\$75.00
Recycling	
15 Gallon Bag	\$.25
30 Gallon Bag	\$.50
STS Scaled Recycling per ton, no minimum fee	\$20.00
Bulk Recycling per yard	\$2.00
Special Wastes	
Metal	Free
Freon refrigerators	\$10.00
Dehumidifiers and AC	\$15.00
Commercial Units	\$50.00
Appliances with capacitors	\$4.00
20 lb. propane	\$3.00
1 lb. propane	\$.50
Auto tire	\$2.50
Truck tire	\$8.00
Heavy tire	\$35.00 – \$45.00
Tires, scaled per ton	\$165.00
Sofa	\$8.00
Stuffed Chair (each)	\$3.50
Large mattress and box spring (per piece)	\$8.00
Twin mattress and box spring (per piece)	\$5.00
Rugs and furniture per yard	\$9.00
TV's – small, medium and large console	\$5.00 – \$10.00 – \$20.00
Small electronics	\$2.50
Fluorescent tubes	Free to households/\$.07 foot to businesses
Misc. bulbs and ballasts	\$.50 – \$2.50
Lead acid batteries (each)	\$.50 – \$1.00
Computers (per piece)	\$5.00
Books (per 15 gallon bin)	\$.25
Textiles (per 30 gallon bag)	\$.50
Brush and stumps per yard	\$3.00
Concrete, brick and mortar (per yard)	\$6.00



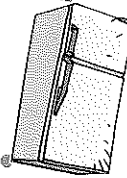
Green Up Day • May 3, 2008



Congratulations to this year's Green Up Poster winners!

Town Coordinators:

Belvidere:	Thad Tallman — 644-8236
Cambridge:	Cambridge Conservation Comm. — 644-2883
Craftsbury:	Adrian Owens — 586-7711, ext. 140
Eden:	Anita Willey-Gagner — 635-2735
Elmore:	Warren & Kathy Miller — 888-2296
Hyde Park:	Vacant
Johnson:	Gail Longley — 635-2917
Morristown:	Morristown Conservation Comm. — 253-4896
Stowe:	Parker Diamond — 253-9577
Waterville:	Tom McGrail — 644-2075
Wolcott:	Amy Noyes — 888-6983
Worcester:	Mary Frances O'Neal — 229-4053
County Coordinator:	Joyce Majors — 888-7317



**Madeline Conlogue
Worcester Home School**

**Phineas Wish
Waterville Elementary**

**Charles Christiansen
Waterville Elementary**

**Acadia LaGue
Waterville Elementary**

**Sarah Dunbar
Craftsbury Elementary**

Do you know of an illegal dump near you? Call us for help at 888-7317.

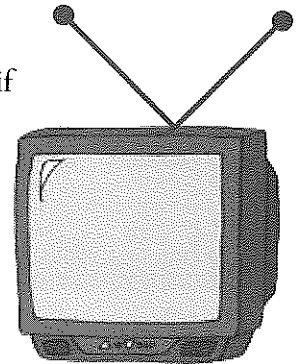
Don't Trash That TV!!

Americans with older, analog televisions which receive signals by antenna must switch to digital by Feb. 17, 2009. Subscribers to cable or satellite service should ask their providers if they need special equipment for digital reception.

If you don't buy a digital model, a converter box will change digital signals back to analog. The boxes range from \$50 to \$75, but starting Jan. 1, 2008, U.S. households may request up to two \$40 coupons to apply to the purchase of the boxes. The coupons must be used within 60 days.

For more information, go to www.dtv.gov or call 1.888.225.5322.

If you do decide to buy a new, more efficient digital TV, all LRSWMD stations accept TVs for recycling.



**This newsletter is
dedicated to "Mikey"
the Stowe Transfer Station Mascot**

1996 — 2008

LRSWMD
29 Sunset Drive
Morrisville, VT 05661

PRSRT STD
CAR-RT SORT
US POSTAGE PAID
PERMIT #222
BARRE, VT 05641

Recycling is mandatory
in the LRSWMD

POSTAL PATRON

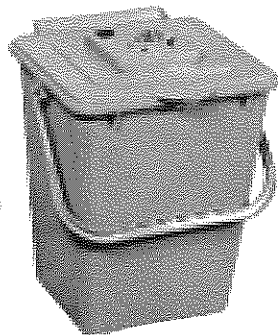


*This newsletter is printed on recycled paper.
Please recycle it again!*

Compost Bin Sale

Kitchen Composter

Kitchen Collectors are available at the District Office and some of our Transfer Stations. This product is 12.5" x 9" square, has a bail handle and holds about 1 to 2 gallons of material. Its size allows it to be placed under your kitchen sink or on your countertop. To help absorb odors, the snap down lid has a replaceable carbon filter.



ONLY \$10!!

SOIL SAVER



The Soil Saver composter is an easy way to convert common yard and food waste into an effective fertilizer, a process which saves valuable land-fill space. It has natural insulating properties due to its structural foam construction, a feature which also makes it resistant to weather and UV rays. It's large capacity means that it can serve a household of up to five people. In addition, the locking lid helps to keep pesky animals out of the compost.

- produces rich, dark humus in 6 to 8 weeks •
- 10 year guarantee •
- 28" w x 28" d x 32" h •
- 2 slide-up doors for easy removal of compost •
- self-watering lid feature •
- assembly required •

Gift Certificates are available for any of our products or services