

Collection

Fall 2008

Connection

A bi-annual publication of the Lamoille Regional Solid Waste Management District



• Last Collection of 2008 •

October 18th

9:00am to 12:00pm

G.W. Tatro – Rtes. 15 & 108, Jeffersonville

**For Lamoille District
Residents ONLY**

What To Bring

Pesticides/Insecticides
Household cleaners
Automotive products
Pool/Hobby chemicals
Kerosene
Oil-based paints
Paint cleaner products
Waste oil
Thermostats
Thermometers
Gasoline
Aerosols

What **NOT** To Bring

Fluorescent Bulbs*
Auto Batteries*
Computers*
Propane Tanks*
Alkaline Batteries
Gas Cylinders
Latex Paint
Radioactive material
Empty containers from hazardous products
Medical waste and medicines

* These items are accepted year-round at any LRSWMD drop off for a minimal fee.

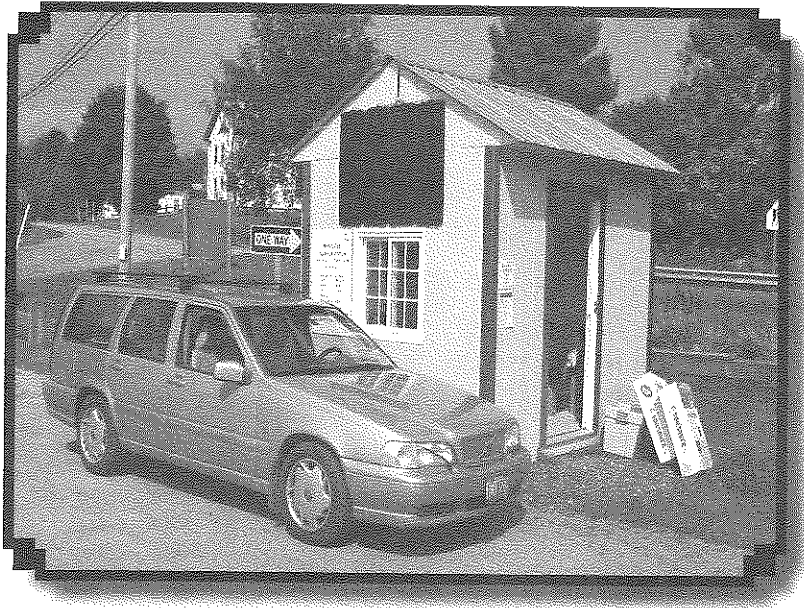
All wastes in 55 gallon drums
MUST call ahead

Businesses Must Pre-Register!

If you are a Conditionally Exempt Generator of HazWaste (less than 220 lbs./mo.), you should use these collections as a less expensive and more convenient method of hazardous waste disposal.

Businesses must pre-register no later than one week prior to the chosen collection date with a waste disposal inventory. For more information, contact the District Office at 888-7317 or visit our website at www.lrswmd.org.

Worcester Transfer Station Goes SOLAR!



The new attendance shed at the Worcester Transfer Station, on Calais Road, has recently installed solar panels to power the new cash register system.

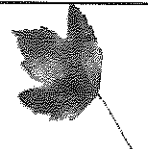
The new drive-up window system has made the station attendant, Harold Richardson, **VERY** happy!

Stop by for a visit. Pick up a compost and recycling bin while you're there.

Community Support

The District is a proud supporter of the following organizations through Stowe bottle redemptions: United Way of Lamoille County, Lamoille Community Food Share and the Central VT Community Action Council's Fuel Assistance program.

Time for Fall Clean-up

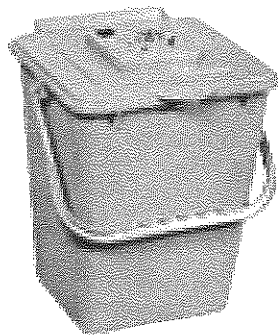


Composters make GREAT Christmas gifts!

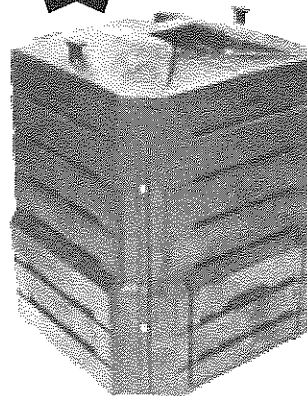
Kitchen Composter

Kitchen Collectors are available at the District Office and some of our Transfer Stations. This product is 12.5" x 9" square, has a bail handle and holds about 1 to 2 gallons of material. Its size allows it to be placed under your kitchen sink or on your countertop. To help absorb odors, the snap down lid has a replaceable carbon filter.

ONLY \$10!!



\$45



The Soil Saver composter is an easy way to convert common yard and food waste into an effective fertilizer, a process which saves valuable landfill space. It has natural insulating properties due to its structural foam construction, a feature which also makes it resistant to weather and UV rays. It's large capacity means that it can serve a household of up to five people. In addition, the locking lid helps to keep pesky animals out of the compost.

- produces rich, dark humus in 6 to 8 weeks
- 10 year guarantee
- 28" w x 28" d x 32" h
- 2 slide-up doors for easy removal of compost
- self-watering lid feature

Holiday Tips

Are you partying this holiday season? Buy your party clothes (which are seldom worn) from consignment shops, or rent them. Also consider renting dishes, glassware, eating utensils and centerpiece to make your party more elegant. Use cloth napkins instead of paper. Serve finger foods to avoid disposable plates and utensils. After your party, don't throw away leftovers . . . package and send them home with guests; donate leftover groceries to local food shelves; compost what is truly waste.

Wrapping Gifts

Try outdated calendar pages and pictures; comics and magazines; boxes made from old holiday cards, old maps, posters and children's artwork; leftover wallpaper (scraps, samples); baskets, cups and mugs; if you do buy new wrapping paper, buy paper with recycled content.

Holiday Cards

Make used cards into postcards; calendar pictures; homemade recycled paper; decorated scrap cardboard; if you do buy new cards, make sure they have recycled content.

For the birds

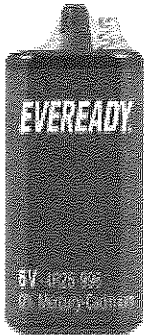
When finished with your Christmas tree, put it outside for cover for our feathered friends, decorating it with popcorn and cranberries strung together, ornaments made with peanut butter, seeds and suet. Or bring to one of our drop-off sites for free composting.

Give the gift of time

Telephone calling cards; free babysitting; bake a cake or batch of cookies; a list of specific household/outdoor chores you will do; movie, theatre or concert tickets; a magazine subscription; homemade jams, jellies, pickles and other goods from the summer's harvest.

Need a holiday gift idea? We have gift certificates available.

What To Do With Household Batteries?

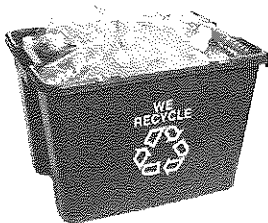
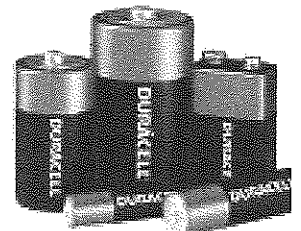


The most commonly used batteries, made by *Eveready*, *Duracel*, *Rayovac*, etc. and often say "Heavy Duty", are alkaline and carbon-zinc batteries. Any of these batteries which were manufactured after 1992 can be thrown away. YES . . . throw them away! The amount of mercury in these batteries was drastically reduced in 1992 and was totally eliminated in 1994. Lithium batteries that are spent can also be thrown away.



However, if your batteries are OLDER than 1992, you must recycle them. You can bring them to the LRSWMD Drop-off Stations for free.

Other batteries that must be recycled and not thrown away are button batteries from cameras and hearing aids; rechargeable batteries and rechargeable battery packs from toys, cell phones, camcorders, electronic equipment and power tools; and any battery that is marked with the words *Nickel-Cadmium (Ni-Cad)* or *Mercury*. Place these batteries in the boxes located at all our stations. These boxes are supplied by the Rechargeable Battery Recycling Corp. We also accept cell phones in these boxes. REMEMBER: WHEN IN DOUBT, DON'T THROW IT



Need a Recycling Bin?

Recycling bins are available at the District Transfer Stations and at the LRSWMD office. Bins may be purchased for \$5 each.

LRSWMD
29 Sunset Drive
Morrisville, VT 05661

PRSR STD
CAR-RT SORT
US POSTAGE PAID
THE MAILING CENTER
05641

*Burning trash is a toxic threat — not only to your health,
but your children's health and your neighbors'.
Think twice about what you burn!*

POSTAL PATRON

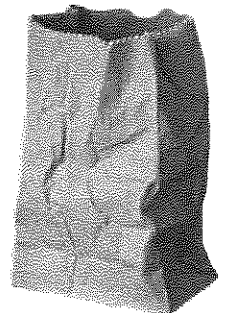


*This newsletter is printed on recycled paper.
Please recycle it again!*

Bring Your Own Bag

Both paper and plastic bags require energy for their production, and energy to be recycled. These processes generate greenhouse gases, which contribute to global warming. Your bag just became part of the problem.

Americans consume 10 billion paper bags each year, requiring 14 million trees for their production. We also use 100 billion plastic bags per year, requiring 12 million barrels of oil to manufacture. Which is the better choice — paper or plastic? NEITHER!



Bag Saving Tips

- Purchase a few high quality reusable bags, each of which has the potential to eliminate an average of 1,000 plastic bags over its lifetime. Some grocery stores offer a credit of a few cents if you bring your own bag, so the bag will pay for itself over time.*
- Keep reusable bags in the trunk of your car at all times! They won't do you any good if you forget them at home.*
- Keep some plastic crates, or a cardboard box, in your car and wheel them into the store with your shopping cart. Groceries go into the crates at checkout. The crates go into your truck and nothing rolls out or falls over on the way home!*
- No bag needed? Think twice about asking for a bag if the item is small or easy to carry by itself. Remind the cashier that you don't need a bag.*